



Società di Esecutori di Pie Disposizioni - Onlus

CITTÀ DI PIENZA • sito unesco

PALAZZO PICCOLOMINI

ROBERT MICHAEL SHAW

60 anni di pittura

1958 - 2018

DAL 25 AGOSTO FINO AL 7 OTTOBRE 2018

La mostra è aperta dalle ore 10 alle ore 18
CHIUSO LUNEDÌ

INGRESSO LIBERO ALLA MOSTRA / FREE ENTRY

Robert Michael Shaw was born in 1937, not far from where his family settled in New York City, in the mid-nineteenth century. After graduating from the Chicago Academy of Fine Arts, in 1960, he embarked upon a lifetime of painting that has seen very few interruptions. Although Shaw has maintained studios in New York City and Chicago, the major part of his artistic career has been lived abroad.

He has lived and painted in such diverse places as the U.S. Virgin Islands, Palma de Majorca, Spain. The Greek islands and the Peruvian Andes. Since 1980, he and his wife have been full-time residents of Italy and currently live in the hilly countryside near Lucca, in the Northwest part of Tuscany. Their 18th century farmhouse sits on a private estate, surrounded by lush forests and sweeping views of the Apennine mountains.

In 2001, the city of Lucca hosted a major exhibit of his works, to celebrate twenty years of painting in Tuscany. The exposition took place in the 16th century Villa Bottini, which serves as the city's cultural centre.

Robert Michael Shaw follows a long, traditional road of en plein-air painting that, to his mind, came to full maturity in the works of Jean-Baptiste-Camille Corot, in the early 19th century. Nowhere is that opinion more borne out than in Corot's paintings of Rome and the surrounding countryside, in the 1820's.

Like many of the great traditional landscape painters of the past, Shaw insists upon working exclusively on location, absorbing the light and textures that surround his everyday life. This provides him with an intimate knowledge and rapport with his subject, thus enabling him to pay homage to the unspoiled beauty of the Tuscan landscape without resorting to either fantasy or sentimentality.

“There is only one master here – Corot. We are nothing compared to him – nothing.” Claude Monet, 1897

PRIMA SALA

PIENZA (SI)	60,0x80,0 cm	2015
SCARPE		
MEZZA LUNA	-	
VIGNE	36,5x47,5 cm	2011
PIENZA (SI)	60,0x80,0 cm	2012
CAMPAGNA SENESE	50,0x70,0 cm	1982
S. ANNA IN CAMPRENA (SI)	70,0x90,0 cm	2013
PIENZA (SI)	50,0x70,0 cm	2015
PROV. DI FIRENZE	40,0x60,0 cm	2007
PROV. DI FIRENZE	40,0x60,0 cm	2012
VAL D'ORCIA (SI)	60,0x80,0 cm	2018
VOLTERRA (PI)	50,0x70,0 cm	2004
PIENZA (SI)	50,0x70,0 cm	2018
POPPIANO (LI)	80,0x120,0 cm	2010
NATURA MORTA	50,0x70,0 cm	-
AUTORITRATTO, 80 ANNI	40,0x50,0 cm	28.08.2017
CRETE SENESI	60,0x80,0 cm	2013
PIENZA (SI)	29,0x43,0 cm	-
CRETE SENESI (VESCONA)	44,0x64,0 cm	2017
L'AMOROSA (SI) -ROSE-	60,0x80,0 cm	2013
NATURA MORTA	50,0x70,0 cm	2000
LE ROSE (LU)	40,0x50,0 cm	2000
VILLA FORCI (LU)	35,0x50,0 cm	2000
VILLA FORCI (LU)	60,0x90,0 cm	2000

SECONDA SALA

LA PIANTA	50,0x50,0 cm	2001
PIENZA (SI)	50,0x70,0 cm	-
PIENZA (SI)	50,0x70,0 cm	-
PIENZA (SI)	30,0x45,0 cm	2015
GIRASOLE	60,0x100,0 cm	2010
VAL D'ORCIA (SI)	60,0x80,0 cm	2017
CORSIGNANO (PIENZA)	50,0x70,0 cm	2014
PALAZZO MASSAINI (PIENZA)	50,0x70,0 cm	2014
VAL D'ORCIA (SI)	60,0x80,0 cm	2014
S. QUIRICO D'ORCIA (SI)	70,0x90,0 cm	2017
NATURA MORTA	50,0x70,0 cm	-
PALAZZO MASSAINI (PIENZA)	38,0x55,0 cm	1995
TEMPORALE – PIENZA	50,0x70,0 cm	2012
CHIANTI STORICO (FI)	60,0x80,0 cm	2016
CRETE SENESI (SI)	60,0x80,0 cm	2013
VAL DI CHIANA (AR)	60,0x90,0 cm	2017
VAL D'ORCIA (SI)	50,0x70,0 cm	2014
CHIANTI STORICO	90,0x140,0 cm	2017

TERZA SALA

VAL D'ORCIA – UNESCO	60,0x80,0 cm	2014
CHIANTI STORICO	60,0x90,0 cm	2017
CAMPAGNA SENESE	40,0x50,0 cm	2016
CIPRESSI - SIENA	50,0x70,0 cm	2014
CAMPAGNA – CHIUSI	50,0x70,0 cm	2014
CHIANTI CLASSICO	50,0x70,0 cm	2007
OLIVETO – CORTONA – (AR)	38,0x55,0 cm	-
CASTELLO DI BANFI (SI)	50,0x70,0 cm	2016
VIGNA LUCCHESE	50,0x70,0 cm	2004
VIGNE – MONTEPULCIANO	50,0x70,0 cm	2013
SAN GIMIGNANO (SI)	50,0x70,0 cm	2014
CASTELLO DI BANFI (SI)	50,0x80,0 cm	2015
DUE CASE – LUCCA	50,0x70,0 cm	2004
VIGNE / AUTUNNO (SI)	38,0x55,0 cm	1996
VIGNE / AUTUNNO (LU)	70,0x100,0 cm	2004
CASA – LUCCA	20,0x70,0 cm	2003
VILLA SODO – CORTONA – (AR)	33,0x68,0 cm	1997
PAGLIAIO – CORTONA – (AR)	28,0x75,0 cm	1985
PAGLIAIO – CORTONA – (AR)	28,0x53,0 cm	2010
PAGLIAIO – CORTONA – (AR)	28,0x53,0 cm	2010
ALBERO –CASTELMUZIO – (SI)	60,0x80,0 cm	2013
IL CHIANTI (SI)	60,0x80,0 cm	2014

QUARTA SALA

CASA MIA / NEVE	50,0x70,0 cm	2009
ALPI APUANE / NEVE	50,0x70,0 cm	2009
CORTONA / NEVE	40,0x60,0 cm	1995
L'APPENNINO (LU)	60,0x80,0 cm	2009
L'APPENNINO (LU)	60,0x90,0 cm	2009
L'APPENNINO (LU)	50,0x70,0 cm	2010
GIOVIANO (LU)		2005
GIOVIANO (LU)		2005
JANE, 45 ANNI	50,0x70,0 cm	1984
NATURA MORTA	50,0x70,0 cm	2006
NATURA MORTA	50,0x70,0 cm	2004
CASA – LUCCA	60,0x100,0 cm	2010
VENEZIA	50,0x70,0 cm	2007
LAGO SEGRETO (SI)	40,0x60,0 cm	2013
MYKONOS (GRECIA)	28,0x35,0 cm	1963
CAPRI –LUCCA	30,0x60,0 cm	2004
IL SERCHIO (LU)	50,0x70,0 cm	2002
LAGO DI MASSACIUCCOLI (LU)	25,0x70,0 cm	2003
CASA DI PESCATORE (LU)	25,0x50,0 cm	2001
DUE ALBERI / STRADA – PIENZA	30,0x40,0 cm	2014
LA CAMPAGNA TOSCANA	17,0x53,0 cm	1996

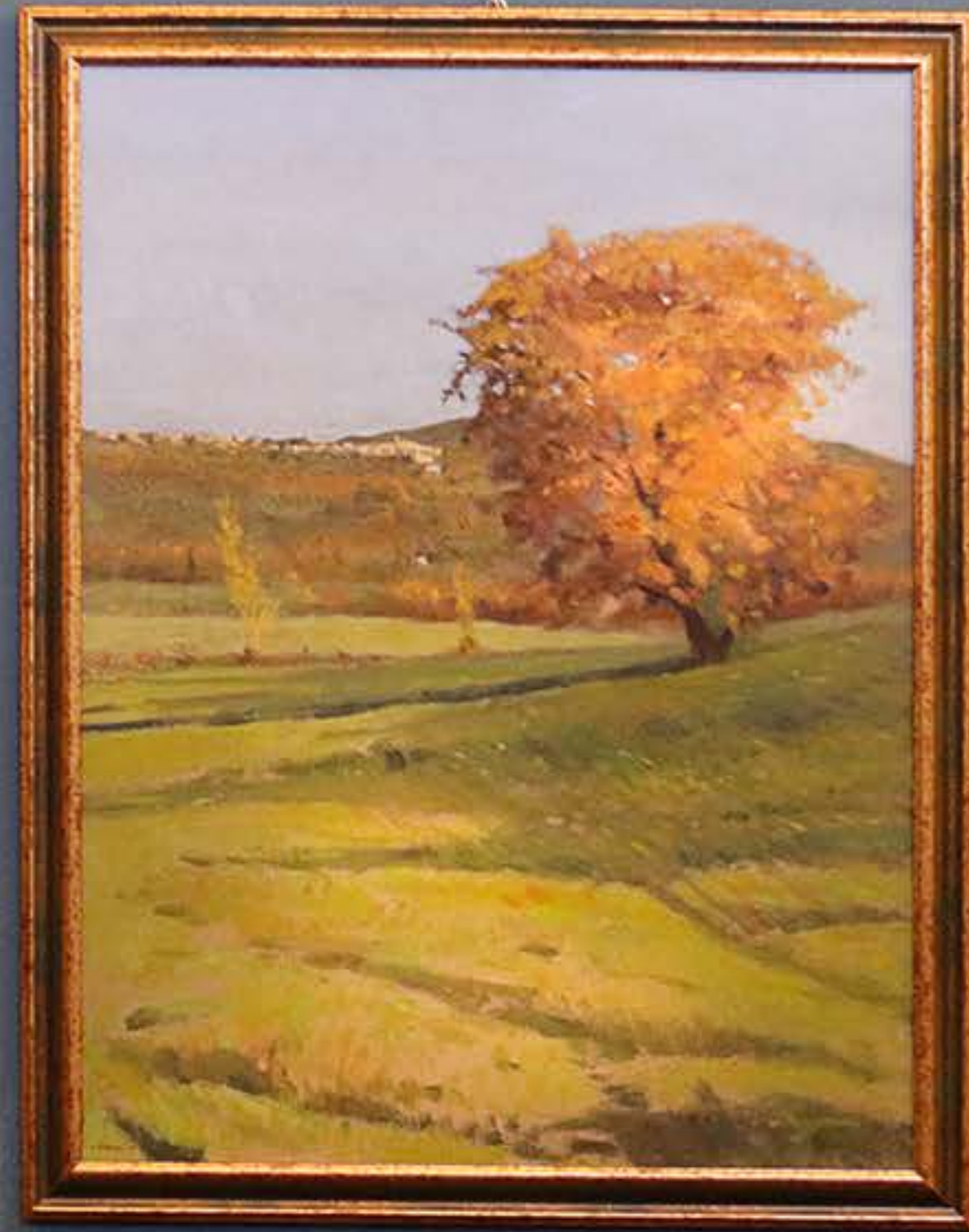




















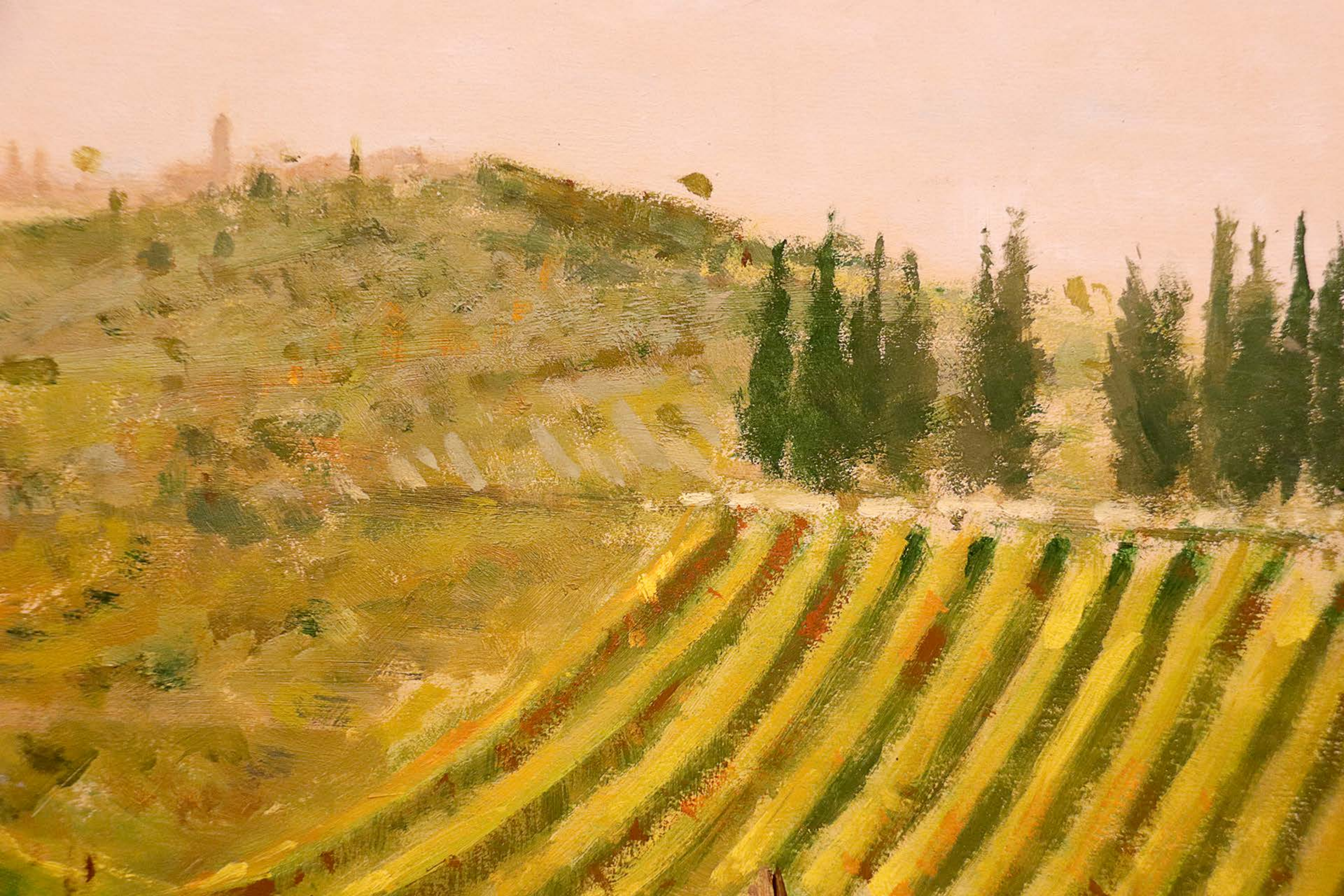


2006











Sarav 04







































2013





















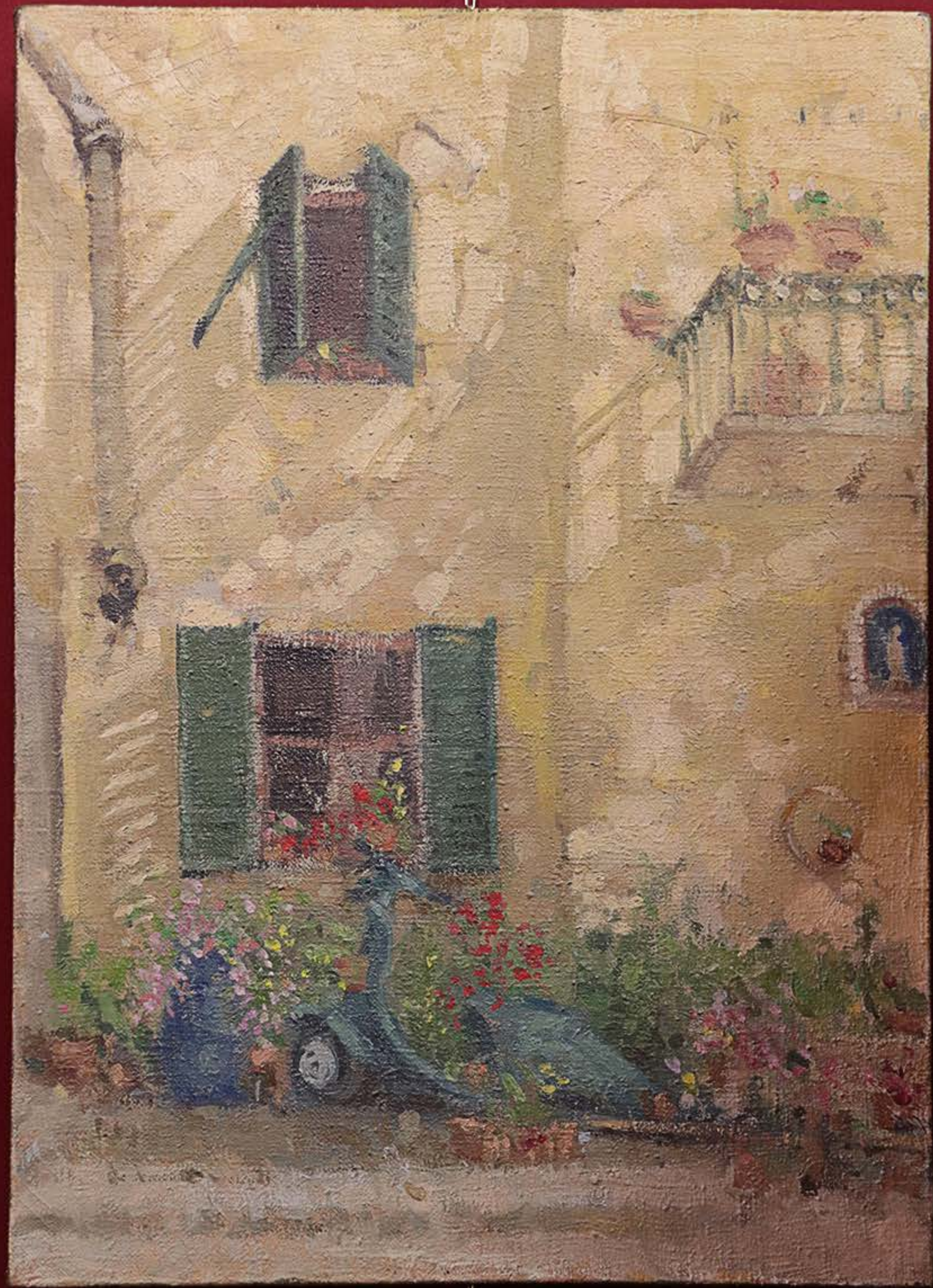
FAL
MA F













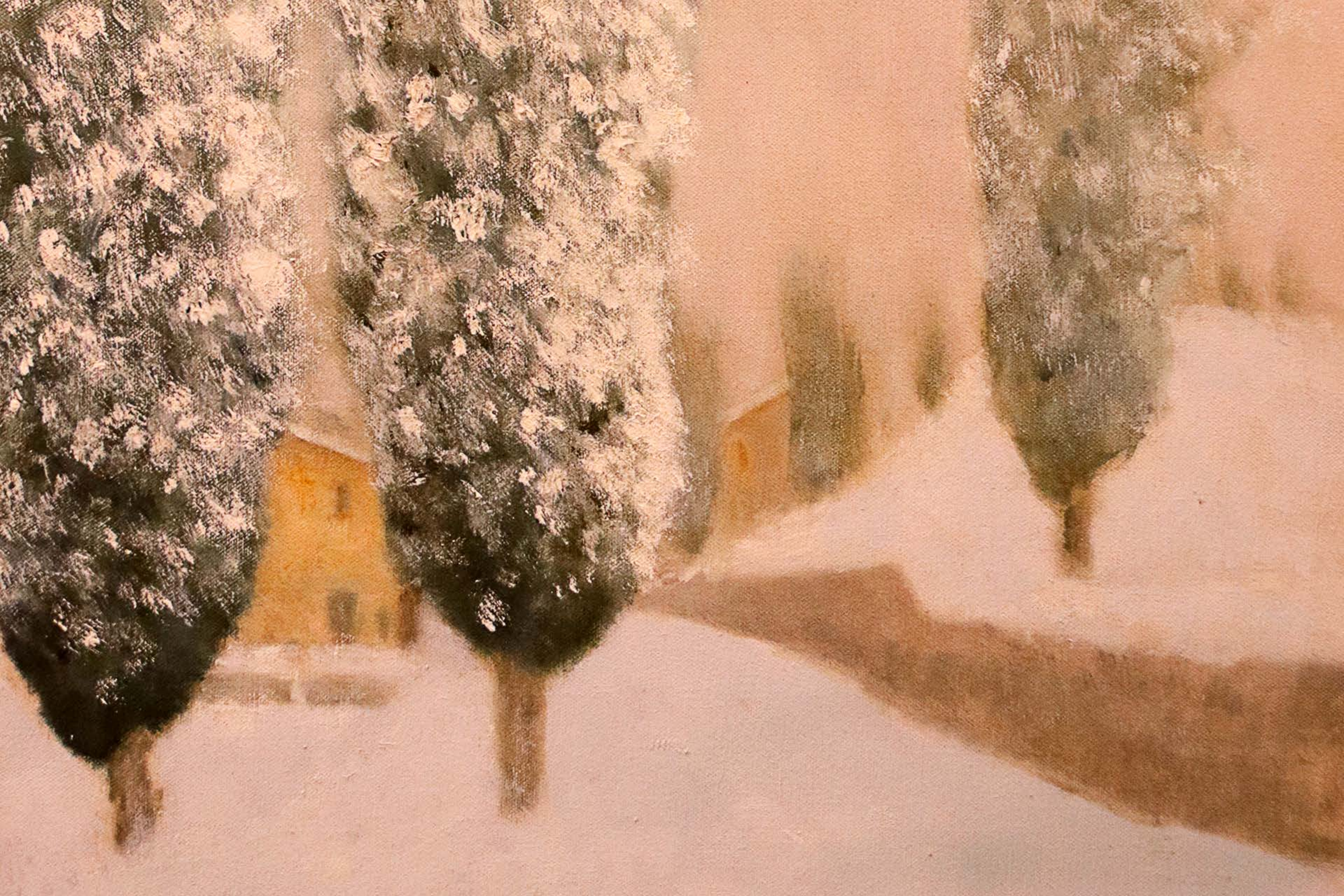














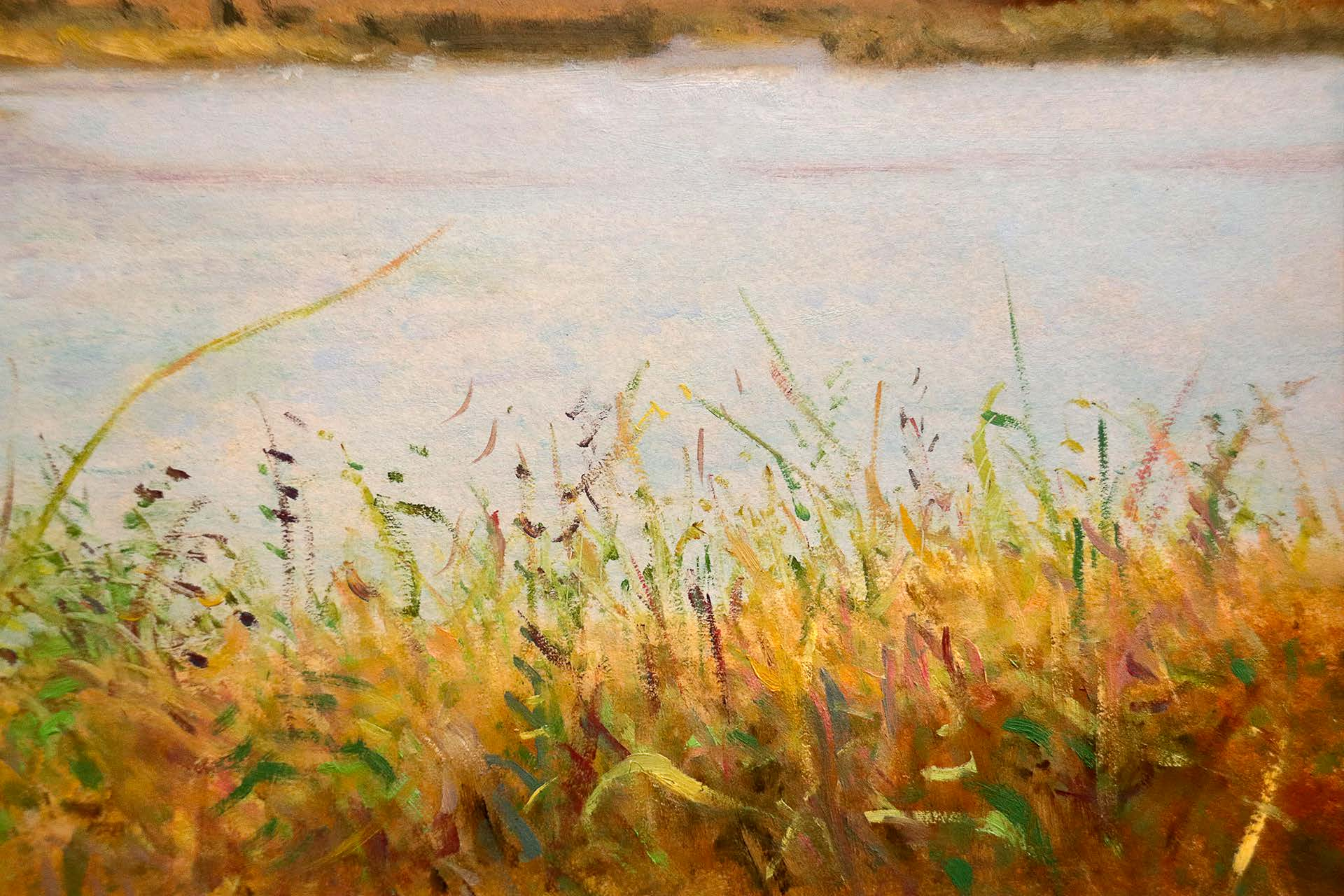


















COROT



Shaw.